



## Instant Global Trading with GXS Trading Grid<sup>SM</sup>

The rapid globalization of manufacturing and the increasingly complex scope of data exchanged between trading partners present great challenges to the effective and efficient trading that drives your business. In addition, you must bridge the gap from legacy EDI systems and standards to new open standards such as XML and AS2.

Yet, the solution to these challenges is clear. You can enable Instant Global Trading with Covast B2B Suite for GXS Trading Grid. This comprehensive business integration solution leverages the transformation capabilities of BizTalk Server and the unique global platform of the GXS Trading Grid to optimize and streamline your trading activity. The GXS Trading Grid gives you instant access to over 40,000 trading partners around the globe.

The Covast B2B Suite enables fast, secure, cost-effective, and reliable connections to your global trading partners. Whether you already have large investments in EDI or you want to leverage your investment in BizTalk Server by bringing EDI into your arsenal of capabilities, the Covast solution is designed to help you grow your business.



The Covast B2B Suite delivers advanced functionality and tight integration with the GXS Trading Grid to take your business to a whole new level of efficiency:

- **Trade instantly:** The solution's "Trade Now" facility automatically imports information on partners and their meta data, enabling immediate trading activity.
- **Manage trading partner information easily:** Trading partner configuration data and relationship information is synchronized between the GXS Trading Grid and the Covast B2B Suite automatically.
- **Monitor trading activity proactively:** Connection with the GXS Trading Grid enables real-time updates on delivery and receipt information and document status.

**Covast B2B Suite for GXS Trading Grid Enables Seamless B2B/EDI with BizTalk Server.**

Conducting B2B/EDI with BizTalk Server is as simple as installing the Covast B2B Suite. Once this is done, you can access all available EDI features from within the BizTalk environment. Simply use the Trading Partner Management tool hosted by the BizTalk Administration Console to define your EDI trading relations, then use the BizTalk Mapper for transforming EDI documents and the BizTalk Orchestration Designer to orchestrate your B2B exchanges. At runtime, the BizTalk Health and Activity Tracking (HAT) facility will track and trace your EDI documents. One comprehensive toolset manages and monitors your EDI and other traffic.

**Full end-to-end support for complex EDI requirements.**

Whether you just need to exchange invoices and purchase orders or you manage an EDI exchange that disperses a vast variety of documents, Covast addresses all of your requirements. Covast B2B Suite simplifies the technical challenges of integrating EDI infrastructures – with your internal applications as well as your trading partners – making it easy to process and generate both inbound and outbound EDI messages.

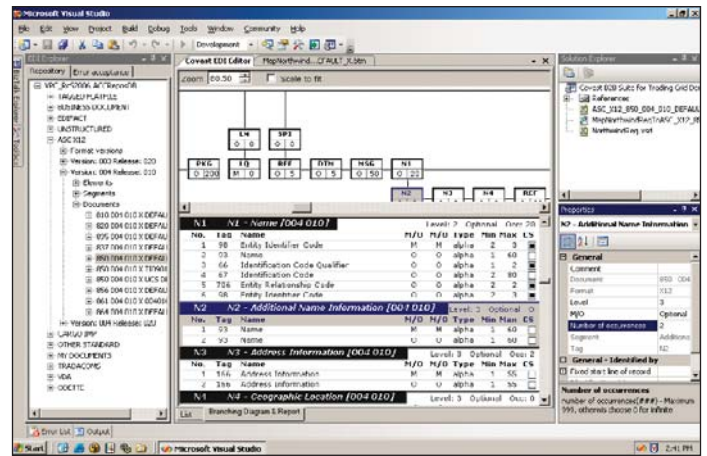
**Control of EDI specifications and versions.**

The Covast B2B Suite easily handles the storage, management and editing of EDI specifications. An SQL Server-based metadata repository stores all of your document types, versions, standards and partner-specific implementations. These include standards such as X12, EDIFACT, TRADACOMS, VDA, ODETTE and others, as well as proprietary file formats, which are used to process the wide variety of inbound and outbound documents. When starting trading relationships with trading partners on the GXS Trading Grid, the implementation guides used by these trading partners can be automatically downloaded and imported into the metadata repository, ready for immediate use.

You can use pre-defined document definitions or you can customize the definitions and settings using an efficient, easy-to-learn workbench hosted by Microsoft Visual Studio – The Covast EDI Explorer. Either way, Covast makes it simple.

**EDI to XML parsing and XML to EDI serialization.**

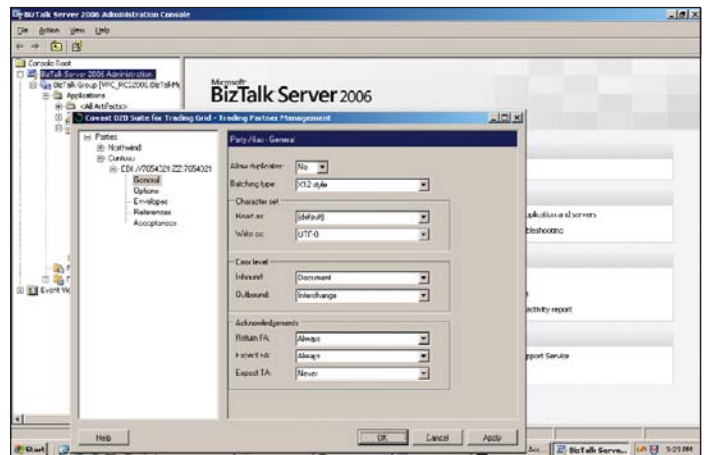
The Covast B2B Suite automatically renders an XML schema representation (XSD) of the EDI format for use in BizTalk Server. Even partner-specific XML schemas can be generated; you can easily accommodate specific EDI Implementation Guides used by different business partners.



All EDI document specifications, including standards definitions and partner-specific documents, are stored in Covast's SQL Server EDI repository and can be maintained using the Covast EDI Explorer hosted by the Visual Studio application development framework. The EDI Document definitions can be added as Generated Schemas using the Solution Explorer by selecting them from the EDI repository. This "enables" them as XML Schemas (XSD) and they will be added to the current BizTalk solution automatically. They are then ready for immediate use in the BizTalk Schema Editor, Mapper and Orchestration Designer.

**EDI envelope mapping and translation support.**

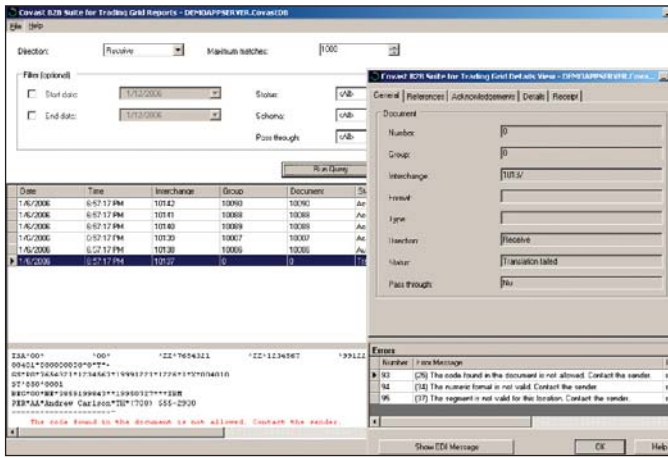
All critical EDI document envelope information is retained. The Covast B2B Suite for GXS Trading Grid maps information to and from any envelope, regardless of its structure. You can easily define partner-specific envelopes. They will be automatically mapped as needed; no user intervention or programming required. Envelope contents of inbound documents are passed in their entirety to BizTalk Server Message Box, ready to be interrogated from within a Mapping or Orchestration for making decisions based on envelope contents



Covast B2B Suite for GXS Trading Grid can be easily configured to batch outbound documents. Simply select one of the available batching types for each trading partner to communicate with. You can even control document batching and sequencing from within your BizTalk mappings, thereby guaranteeing that specific documents end up in designated batches.

**Complete auditing and tracking.**

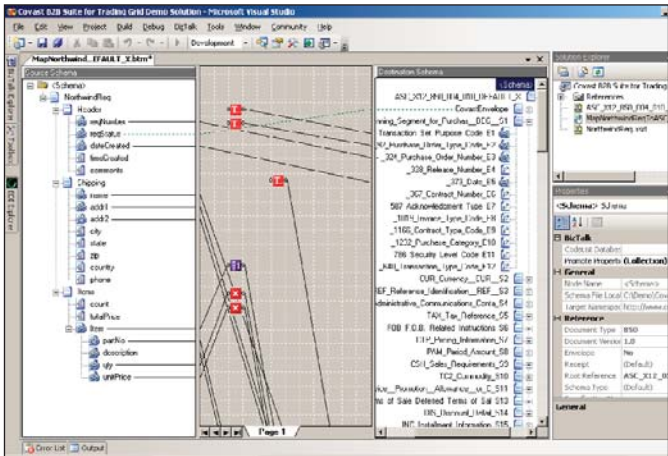
The Covast B2B Suite provides thorough auditing and tracking of all documents processed. Before they are published to the BizTalk Message Box or external trading partners, inbound and outbound documents are validated for syntactic and semantic correctness against the EDI standard or trading partner specific implementation guidelines. Sent and received documents can be tracked through the BizTalk HAT (Health and Activity Tracking) tool. This also reflects the latest status of these messages on the GXS Trading Grid, so from within the Covast B2B Suite you can actually see that a message has been read by your trading partner.



Covast EDI Accelerator keeps a thorough Audit Log of all documents it processes. Any processing error messages are also sent to the BizTalk Server Event Log. Messages that failed validation can be debugged directly from HAT.

**End-to-end functional acknowledgments.**

Covast B2B Suite delivers full support for functional acknowledgments. This includes appropriate distribution, tracking and error management. Users can also easily track the acknowledgments from within HAT. Delivery of EDI and other types of messages is guaranteed as soon as their status is updated to 'Sent' in HAT.



Covast EDI Accelerator tightly integrates with BizTalk Server. The EDI Translation functionality (translating EDI to XML and vice versa) has been implemented as a set of pipeline components complying with the standard BizTalk Server architecture. Mapping of the EDI messages is done using the standard BizTalk Mapper. The GXS Trading Grid Adapter has been implemented as a standard BizTalk Transport Adapter complying with the Adapter Framework. No programming work is required for the configuration of BizTalk Server. All you have to do is define your EDI Trading Partner profiles using the Trading Partner Management (TPM) console, and the connections to those partners through the standard tools provided by BizTalk Server.

**Scalable to business requirements.**

Covast B2B Suite's scalable design helps businesses integrate their continually increasing number of trading partners and growing trading volumes easily. The solution has been designed to scale out very well, which means that adding more servers to the group will almost linearly increase the processing power of the Covast B2B Suite helping enterprises to accommodate the grow of their businesses without any limits.

Studies show that 80% of the Fortune 500 companies are using EDI – but only with 20% of their trading partners. Most trading partners are not equipped to leverage the benefits of EDI. With Covast solutions, you can easily bridge the gap from complex EDI requirements to the emerging XML world. This gives companies and their suppliers a highly productive avenue for gaining greater efficiency – and ongoing competitive advantage.

**Covast B2B Suite for GXS Trading Grid provides:**

**→ EDI and non-EDI Standards Support**

- X12 (U.S.)
- VICS (U.S. general merchandise retail)
- WINS (U.S. warehousing retail)
- UCS (U.S. grocery retail)
- EDIFACT (Worldwide)
- EANCOM (European retail)
- Tradacoms (U.K.)
- VDA (German automotive)
- Odette (Automotive)
- XML
- Cargo-IMP (Airfreight)
- Gencod (France)
- Name/Value Pairs
- Proprietary flat files
- Other (user configurable)

**→ Common EDI Features — Run Time**

- Customizable outbound batching
- Inbound de-batching
- Syntax validation
- Semantic validation
- Complete functional acknowledgement generation and reconciliation
- TA1 (Interchange Acknowledgment) generation and reconciliation
- Custom control number generation
- Full end-to-end tracking
- Audit trail of documents handled
- Archiving of documents
- Access to EDI envelope information
- Detailed error logging on element level

**→ Common EDI Features — Design Time**

- SQL repository driven
- Document versioning
- Standards import facilities
- Full compliance checking
- Customize standard documents
- Implicit XML to EDI (and vice versa) conversion support

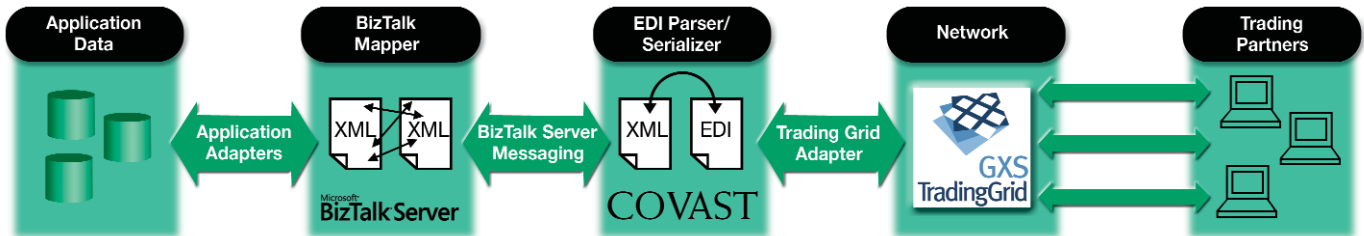
**→ Trading Partner Management**

- All B2B related trading partner properties managed from one central place
- Interchange agreement compliance checking
- Trading partner-specific handling

**→ Advanced EDI Features**

- Context switching in transformation
- Use of EDI documents in process flow/orchestration

## The Easy Bridge From EDI to XML

**Covast B2B Suite for GXS Trading Grid Architecture**

Architecturally, the Covast B2B Suite consists of run time components and design time components. The run time components parse inbound EDI documents into XML and serialize outbound XML instances into their appropriate EDI format. Additionally, the Covast GXS Trading Grid Adapter - set up as a BizTalk Transport Adapter - arranges the communications with the GXS Trading Grid and the Covast batcher orchestrations take care of batching outbound EDI messages into interchanges. The design time components are used for the management of EDI Document Definitions (using the "EDI Explorer"), the management and monitoring of the EDI partners (using the "TPM" and "HAT") and the configuration of the actual exchange of documents using the standard BizTalk tools Visual Studio and the BizTalk Administration Console, that have been extended with EDI specific functionality.

**Imagine Commerce Unbound**

Covast provides fast and flexible software that simplifies the complexity of connecting, translating and sharing information with customers and suppliers. As the Microsoft recommended EDI solution for the BizTalk Server environment, we understand your connectivity issues. We are fully prepared to assist Microsoft BizTalk customers today.

To learn more, visit [www.covast.com](http://www.covast.com) or call **1.866.COVAST1** or **+ 31 10.235.10.22** in Europe.



commerce unbound

[www.covast.com](http://www.covast.com)

**Microsoft**  
**GOLD CERTIFIED**

Partner

**Covast B2B Suite for GXS Trading Grid Technical Specifications**

To install Microsoft BizTalk Server 2006 and the Covast B2B Suite for GXS Trading Grid, the following hardware and software is required at a minimum:

- Microsoft Windows Server 2003 (SP1) or Windows 2000 Server (SP4)
- Microsoft SQL Server 2005 or SQL Server 2000 (SP4)
- 1 Gigahertz (GHz) Intel Pentium-compatible CPU for single processors (900 MHz for double, 700 MHz for quad)
- 1 Gigabyte (GB) of RAM
- 6 Gigabyte (GB) free hard disk space
- CD-ROM or DVD-ROM drive
- Super VGA monitor (1024 x 768) or higher resolution monitor with 256 colors
- For 64-Bit systems, either an AMD Opteron (AMD64) or Intel XEON (EM64T) or compatible 1.7 GHz or higher processor is recommended.

To run Microsoft BizTalk Server including the Covast B2B Suite in a production environment, Microsoft and Covast advise a configuration with multiple processing servers and a SQL Server cluster environment to ensure high availability and handle fail over scenarios.

The solution is able to scale up (add more CPU power, CPU's and/or memory to individual servers) and scale out (add more processing servers to spread the work load). Covast representatives can assist in determining the best-suited architecture for each specific customer situation.